



PHILADELPHIA HOLOCAUST REMEMBRANCE FOUNDATION



The expanded **Philadelphia Holocaust Memorial Plaza** will honor the memories of the martyrs of the Holocaust, while educating visitors about the atrocities of the past to ensure that they are not repeated.

IN ADDITION TO THE EXISTING SIX MILLION JEWISH MARTYRS STATUE, THE PLAZA WILL FEATURE:

- The Six Pillars, which will juxtapose the horrors of the Holocaust with American constitutional protections and values
- A granite Remembrance Wall that encourages, contemplation, with a recessed Ner Tamid (Eternal Flame)
- Original train tracks from the Treblinka death camp
- A sapling from the original silver maple tree planted by children from the Theresienstadt concentration camp

- A grove of trees to represent the woodlands that sheltered those who resisted the Nazi regime
- An interactive smartphone app, developed in partnership with the USC Shoah Foundation, which presents information about the Plaza's design elements, as well as recordings of survivors telling their stories

The enhanced Plaza will open to the public in 2018. The Plaza is spearheaded by the Philadelphia Holocaust Remembrance Foundation and is funded by private donors and a RACP grant from the Commonwealth of Pennsylvania.

BE A PART OF THIS SPECIAL MEMORIAL PLAZA!

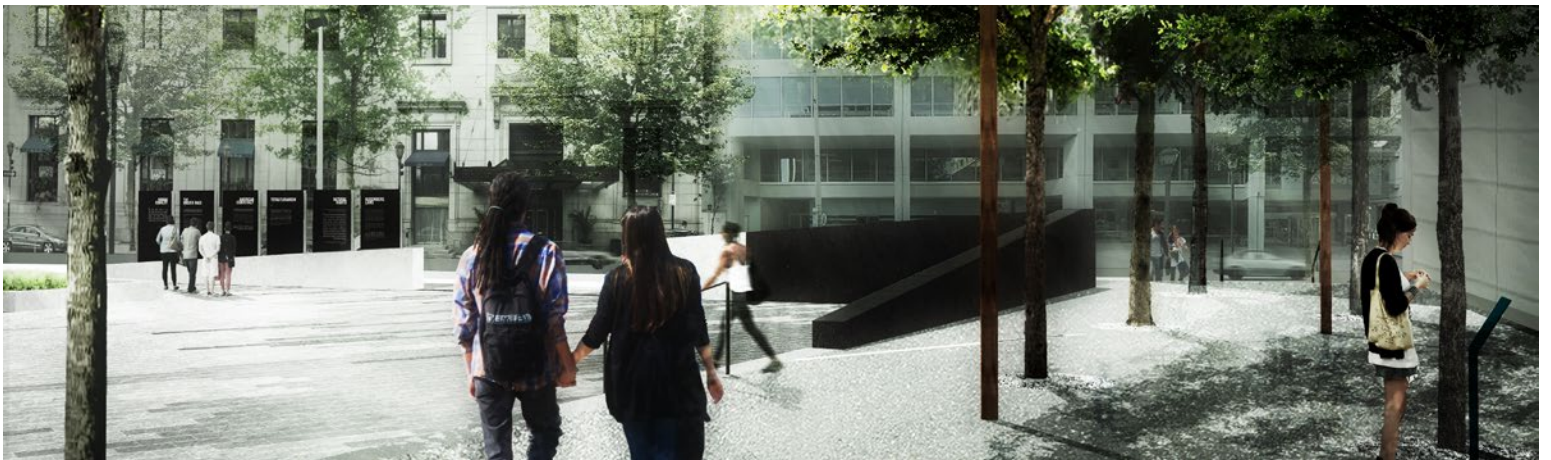
For information about tax-deductible donations and sponsorship opportunities, contact info@philaholocaustmemorial.org or visit www.philaholocaustmemorial.org



Preserving the lessons of the past to build a future of tolerance.



JOIN US IN CREATING A HISTORIC LANDMARK IN THE HEART OF PHILADELPHIA!



PHILADELPHIA HOLOCAUST
REMEMBRANCE FOUNDATION

Preserving the lessons of the past to build a future of tolerance.